
**Please find attached the reports in respect of Items 7
and 12 on the agenda for the above meeting**

7.	Destination Tweed Programme Update (Pages 3 - 12) Consider report by Director Infrastructure and Environment. (Copy attached.)	15 mins
12.	Review of Scottish Parliamentary Constituency Boundaries (Pages 13 - 24) Consider report by Chief Executive. (Copy attached.)	15 mins

This page is intentionally left blank



UPDATE ON THE DESTINATION TWEED PROGRAMME

Report by Director Infrastructure and Environment

SCOTTISH BORDERS COUNCIL

25 May 2023

1 PURPOSE AND SUMMARY

- 1.1 This report provides an update to Council on progress with the Destination Tweed Programme, which forms part of the Borderlands Inclusive Growth Deal.**
- 1.2 The Destination Tweed Programme is a £24.7m capital programme that is part of the Borderlands Inclusive Growth Deal. The Destination Tweed Programme comprises 13 different projects, the most significant of which is the Tweed Trail, which will be a 113-mile long walking and cycling trail from Moffat to Berwick-upon-Tweed. A contribution of £10m from the Deal will help to fund the Tweed Trail. The programme is being led by Tweed Forum on behalf of Scottish Borders Council, Northumberland County Council and Dumfries and Galloway Council.
- 1.3 An Outline Business Case is ready to be signed off by the Scottish Government and a draft Full Business Case will shortly thereafter be submitted for Government consideration, which will then require approval from Council and the Borderlands Partnership Board.
- 1.4 Scottish Borders Council intend to take a lead role on the project management and construction of the Tweed Trail, expanding on the work undertaken in 2022/23. This is being formalised via a revision of a Memorandum of Understanding between the Council and Tweed Forum.
- 1.5 A governance structure for the programme is being established. It is led by a Programme Delivery Board with a proposal for a series of Working Groups. A Business Engagement Working Group is also being established.

2 RECOMMENDATIONS

2.1 It is recommended that Council:

- (a) Notes the information provided on the current position with the Destination Tweed Programme.**
- (b) Endorses the Council's project delivery arrangements for the Tweed Trial.**
- (c) Notes that programme Outline and Full Business Cases will be brought back to Council for approval in 2023 as detailed in paragraph 3.4.**

3 BACKGROUND

- 3.1 The Destination Tweed Programme is a £24.7m capital programme that is part of the Destination Borderlands Theme within the Borderlands Inclusive Growth Deal. A contribution of £10m from the Borderlands Inclusive Growth Deal will help to fund the Tweed Trail project, which will be a 113-mile long walking and cycling trail from Moffat to Berwick-upon-Tweed. The overall programme will create a unique, world-class visitor destination that will connect and promote multiple assets in the region and become known as one of the great long distance routes in the UK.
- 3.2 The programme is being led by Tweed Forum on behalf of Scottish Borders Council, Northumberland County Council and Dumfries and Galloway Council. Tweed Forum have a small dedicated team who work to protect, enhance and restore the rich natural, built and cultural heritage of the River Tweed and its tributaries. The programme consists of 13 different projects. These projects are described in the following table:

Project name	Description
P1 Tweed Trail	The creation of a 113-mile long walking and cycling trail from Moffat to Berwick-upon-Tweed.
P2 Crook Inn Bunkhouse	Construction of Bunkhouse accommodation at the community owned and C-listed Crook Inn.
P3 Biggar Water	A partnership between Tweed Forum, South Lanarkshire Council and SEPA to restore natural habitats.
P4 Designed Landscapes	Planting of 50,000 specimen/native trees over a 5-year period to conserve and regenerate degraded landscapes.
P5 Invasive Non-Native Species (INNS)	Co-ordinating the facilitation of a collaborative and large-scale INNS control programme.
P6 Woodlands for Wildlife and Water	Planting approximately 200 ha (300,000) of new native & riparian woodlands to benefit communities downstream from upper catchments.
P7 Tweed Watch – Education and Training Programme	Developing and delivering an environmental education and outreach programme to inspire people to care for their environment.
P8 Pollinators Along the Tweed	Employing a conservation officer to work with volunteers in creating, monitoring and managing key and beneficial pollinator habitats.
P9 Reviving the Wild Heart of Southern Scotland	An ecological restoration initiative to plant 52,500 trees and shrubs to create 80ha of upland native woodland and montane scrub over a

	5-year planting period. In addition, the restoration of barns and new volunteer facilities.
P10 Uncovering the Tweed - Archaeology Programme	Community based archaeology programme throughout the programme area with training and participatory opportunities.
P11 Tweed Stories – Interpretation and Branding	The creation of a distinct brand identity and an exceptional physical and digital interpretive experience.
P12 Connecting Threads	A 5-year creative, placemaking project in a rural area, focusing on a river rather than a centre of population to offer a diverse mix of river-related activities.
P13 Third Party Community Grants	Available for small scale projects to enable engagement with the Trail and the other projects.

3.3 The Destination Tweed programme is expected to deliver significant economic benefits for the Borderlands area and the wider region:

- By the end of year 10, there will be an additional 303,299 visitors per annum, which will be maintained thereafter (compared to business as usual).
- These additional visitors will spend approximately £26.9m (gross) p.a. in year 10.
- The additional spend will support approximately 412 jobs (gross) p.a. in year 10, or 203 net additional jobs.
- The additional spend will generate GVA of approximately £20.4m (gross) p.a. in year 10, or £7.4m net additional (discounted) GVA in year 10.
- Increased levels of walking and cycling and other non-motorised travel will contribute at least £5.6m in Active Modes benefits (improved health outcomes and reduced absenteeism).

3.4 An Outline Business Case is ready to be signed off by the Scottish Government and a draft Full Business Case will shortly thereafter be submitted for Government consideration, which will then require approval from Council and the Borderlands Partnership Board. The initial Strategic Outline Case was approved by Council in November 2020. Prior to this, Council approved a contribution of £174,500 to the programme development phase through emergency powers in March 2020. This investment funded works surveys, capacity building, professional fees, and recruiting and staffing. The development phase was completed in March 2022.

4 PROGRESS ON TRAIL WORKS

4.1 Scottish Borders Council have a strong track record in delivering active travel infrastructure, with specific in-house expertise in construction project management, engineering design and construction. Whilst the River Tweed starts in Dumfries and Galloway and ends in Northumberland, the most significant stretch runs through the Scottish Borders. Due to these factors,

Scottish Borders Council have assumed the lead role in project managing and constructing the Tweed Trail. This is being formalised through a Memorandum of Understanding (MOU) between Scottish Borders Council and Tweed Forum which will detail roles and responsibilities and the transferring of funds from funders to Scottish Borders Council. This is being coordinated by the Council's Legal team.

- 4.2 Initial funding was made available during 2022/23 which enabled works to begin on-site on initial sections of Tweed Trail at a cost of £494k. These works were funded in full by Sustrans with SBC direct grantees of this funding.
- 4.3 The initial Tweed Trail work sections have been delivered in full by SBC Contracts. It is proposed that this procurement model can be adopted for the remainder of 113-mile Tweed Trail construction. A procurement document detailing the benefits of this model has been developed by officers for funder review and sign off.
- 4.4 Works completed to date are:
- 420m of tarmac path installed at Peebles Hydro – with designs ongoing for improvements to main access and A72 crossing as well as link path at East access to current Tweed Valley Trail.
 - Road upgrading works through Yair Estate completing about 1km of trail.
 - Materials purchased for re-decking of Woodend Bridge nr Cardrona.
 - Power connection for Eshiels tunnel – Future lighting and safety enhancements.
 - Neidpath Viaduct and Tunnel principal inspections.
 - Yair Bridge – Traffic signal upgrade to enhance pedestrian/cyclist user phase.
- 4.5 Tweed Forum will maintain an active role in the delivering the project. They will focus developing the route, user experience and landowner agreements along the length of the trail.
- 4.6 It is proposed that the design of the Tweed Trail will largely be undertaken by Scottish Borders Council's in-house Engineering Team. This will be supplemented, as required, by external design services on an ad-hoc basis.
- 4.7 It is proposed that the project will be managed and coordinated by Scottish Borders Council's in-house Major Projects Team and with support from external project managers, replicating the delivery model adopted on the current schools projects.
- 4.8 A list of work sections is being developed for financial year 2023/24 and a funding stream has been indicated from Sustrans.

5 GOVERNANCE

- 5.1 A governance structure for the Destination Tweed programme is being established. It is led by a Programme Delivery Board, which has been in place since July 2022 and meets every month. Key Officers from Scottish

Borders Council attend the Board and it is chaired by the Council's Director of Infrastructure & Environment. There is also representation from Dumfries and Galloway Council, Northumberland County Council, South of Scotland Enterprise, Visit Scotland, Tweed Forum, project partners (Southern Uplands Partnership, Borders Forest Trust, Buglife, Tweedsmuir Community Company), the Borderlands Inclusive Growth Deal Programme Management Office, SEPA and landowners via Scottish Land and Estates. Further details on the governance structure will be included within the Full Business Case for the project.

5.2 The governance below the Programme Board level is being grouped within three themes, which cover all 13 projects within the programme and are focused on delivery:

- Economy - Sustainable Infrastructure;
- Environment - Landscape and Biodiversity; and
- Community - People and Activities.

Council Officers will be involved in the steering groups on Sustainable Infrastructure, which include the Tweed Trail and Tweed Stories Branding and Interpretation.

6 BUSINESS ENGAGEMENT AND MARKETING

6.1 A Business Engagement Working Group, which will include the South of Scotland Destination Alliance (SSDA), VisitScotland, South of Scotland Enterprise, Scottish Borders Council and Tweed Forum, is being established to develop an engagement plan. This will identify partners and audiences as well as activity. With support from VisitScotland and partners, a programme will be developed to include webinars, face-to-face activity and inclusion in partner newsletters and digital channels. SSDA, VisitScotland and South of Scotland Enterprise will identify businesses along the route and undertake targeted business engagement activity.

6.2 These partners are also committed to other major investment activity in the South of Scotland, in particular around cycling, and there will be significant opportunity to build Destination Tweed into engagement activity around other projects such as the Mountain Bike Innovation Centre and Adventure Bike Park, the Glentress masterplan, 7stanes, and the new Kirkpatrick Macmillan Coast-to-Coast route.

7 IMPLICATIONS

7.1 Financial

- (a) As Officers are currently in discussions with Scottish Government officials regarding the overall Borderlands financial profile for 2023/24 and beyond, the latest funding position for the Destination Tweed programme is provisional.

Source of funding	Totals
Borderlands Inclusive Growth Deal	£10m
Northumberland County Council	£1m
South of Scotland Enterprise (SOSE)	£4m
Other	£9.7m
Totals	£24.7m

- (b) The outcome of discussions with Scottish Government will be reported to Elected Members in due course.
- (c) The total estimated budget of the Tweed Trail construction is £14.5m. These costs will be reviewed by external consultants following significant notable increases in construction material and labour costs globally over past few years.
- (d) In 2023/24 Scottish Borders Council is supporting the Tweed Trail through construction, PM support and design fees. These costs will be recovered through external grant claims.
- (e) Sustrans funding of around £800k has been agreed in principle for financial year 2023/24. A final list of Sustrans fundable works is being worked up by the project team.
- (f) A suggested five year phasing programme has been developed by the project delivery team. The main elements of the programme include landowner negotiations, design & planning and construction and where appropriate, land purchase, community consultations and procurement. Each work section will be attributed to an identified funder and programmed to match the funding arrangements and resource availability for each financial year.

7.2 Risk and Mitigations

The programme has a risk register laying out all strategic and operational risks with associated mitigations, and this feeds into a wider risk register that the Council maintains for the Borderlands Inclusive Growth Deal programme. This is revised and updated regularly.

7.3 Integrated Impact Assessment

As part of the Full Business Case submission to Government, the programme will be required to complete an Integrated Impact Assessment. Therefore, this Integrated Impact Assessment will be prepared and submitted to Council for approval along with the Full Business Case to ensure that it meets the requirements of the Equality and Fairer Scotland duties.

7.4 Sustainable Development Goals

The development of the programme will contribute to the ambitions to be a green, fair and flourishing region, helping to achieve net zero ambitions, and support community wealth building and thriving places. An assessment of this contribution towards the outcomes of the 17 UN Sustainable Development Goals will be undertaken as the programme is taken forward. The programme will be subject to a Carbon Impact Assessment as part of the Full Business Case process.

7.5 Climate Change

As the programme is taken forward, there will be specific assessments undertaken to assess embodied carbon emissions during its implementation and lifecycle. The Carbon Impact Assessment required by Government will also allow for the measurement of carbon impacts and benefits relating to the five themes – Resilience, Transport, Nature-based solutions, Energy and Waste – as set out in the Council’s Climate Change Route Map.

7.6 Rural Proofing

This report does not affect or amend rural proofing policies.

7.7 Data Protection Impact Statement

There are no personal data implications arising from proposals contained in this report.

7.8 Changes to Scheme of Administration or Scheme of Delegation

There are no changes to the Scheme of Administration or the Scheme of Delegation as a result of the proposals within this report.

8 CONSULTATION

- 8.1 The Acting Chief Financial Officer, the Interim Chief Officer Corporate Governance (and Monitoring Officer), the Chief Officer Audit and Risk, the Director of People Performance & Change, the Clerk to the Council and Corporate Communications have yet to be consulted on this report. Comments received on the day will be incorporated into the final version of the report.

Approved by

John Curry, Service Director Assets and Infrastructure

Authors

Name	Designation and Contact Number
Greig Gibson	Project Manager – Capital Works 01835 826810
Stuart Kinross	Economic Development Officer 01835 826505

Background Papers: None.

Previous Minute Reference: Council – 18 April 2023; Council – 26 November 2020; Council – 18 March 2020.

Note – You can get this document on tape, in Braille, large print and various computer formats by contacting the address below. Sam Smith can also give information on other language translations as well as providing additional copies.

Contact us at Sam Smith – Samantha.Smith1@scotborders.gov.uk

This page is intentionally left blank



THE SECOND REVIEW OF SCOTTISH PARLIAMENT BOUNDARIES

Report by Chief Executive

SCOTTISH BORDERS COUNCIL

25 May 2023

1 PURPOSE AND SUMMARY

- 1.1 This report provides details of the provisional proposals received from Boundaries Scotland for changes to the Scottish Parliament Constituencies and asks Council to consider what, if any, response it would wish to make.**
- 1.2 As required by legislation, this Second review of Scottish Parliament Boundaries was started in September 2022. In this respect, on 17 May 2023, Boundaries Scotland published its provisional proposals for new constituency boundaries for the Scottish Parliament, and opened a one month public consultation on the proposals, running until the end of Saturday 17 June 2023. The length of the consultation period is fixed in legislation.
- 1.3 There are currently two Scottish Parliament constituencies which include the Scottish Borders – the Ettrick, Roxburgh, & Berwickshire County Constituency, comprising Wards 4, 6, 7, 8, 9, 10 and 11 of Scottish Borders Council (total electorate – 56,409); and the Midlothian South, Tweeddale & Lauderdale County Constituency, comprising Wards 1, 2, 3 and 5 of Scottish Borders Council and Wards 1, 4 and part of Ward 6 of Midlothian Council.
- 1.4 Boundaries Scotland’s provisional proposals make no changes to the Ettrick, Roxburgh & Berwickshire County Constituency, and a map showing this constituency is attached as Appendix 1. There are however, changes proposed to the current Midlothian South, Tweeddale & Lauderdale County Constituency. This would be replaced by a proposed Clyde Valley & Tweeddale County Constituency, comprising Wards 1, 2, 3 and 5 of Scottish Borders Council and Wards 2 and 3 of South Lanarkshire Council. A map showing the new constituency is attached as Appendix 2.
- 1.5 As this is a political matter, no recommendations are provided, but officers have included a number of suggestions. Members may wish to consider whether to suggest moving part of Ward 5 (Oxton, Lauder, Blainslie and Earlston polling districts) from the proposed Clyde Valley & Tweeddale

Constituency into the Ettrick, Roxburgh & Berwickshire Constituency. It is also suggested that to better reflect the wider Scottish Borders, the name for the Clyde Valley & Tweeddale Constituency is changed to the Clyde Valley, Tweeddale & Gala Water Constituency.

- 1.6 Members need to decide whether to submit a response to Boundaries Scotland by 17 June 2023.

2 CONCLUSION

- 2.1 **Scottish Borders Council is required to consider the provisional proposals of Boundaries Scotland in the Second Review of Scottish Parliament constituencies and decide what, if any, response it would wish to make.**

3 BACKGROUND

- 3.1 Boundaries Scotland is an independent advisory non-departmental public body, sponsored and funded by the Scottish Government. The role of Boundaries Scotland is to review and make recommendations for constituencies and regions for the Scottish Parliament; the number of councillors on each council in a local government area; the number of wards for local government elections and their boundaries; and the extent of council areas. The Boundary Commission for Scotland is a separate body responsible for reviewing the boundaries of UK Parliamentary constituencies in Scotland.
- 3.2 The law concerning electoral arrangements for the Scottish Parliament is laid out in Schedule 1 of the Scotland Act 1998, as amended by the Scottish Parliament (Constituencies) Act 2004. The First review of Scottish Parliament boundaries was concluded in 2010, and the existing constituencies have remained unchanged since 2011. As required by legislation, this Second review of Scottish Parliament Boundaries was started in September 2022. In this respect, on 17 May 2023, Boundaries Scotland published its provisional proposals for new constituency boundaries for the Scottish Parliament, and opened a one month public consultation on the proposals, running until the end of Saturday 17 June 2023. The length of the consultation period is fixed in legislation.
- 3.3 (a) There are 4 rules which Boundaries Scotland takes into account when reviewing any boundaries of constituencies, namely:
1. Take account of council area boundaries;
 2. Create constituencies and regions that have broadly the same number of electors
 3. Take account of special geographical considerations (including in particular the size, shape and accessibility of a constituency or region); and
 4. Take account of local ties and other inconveniences caused by changes to constituencies.
- (b) Scottish Parliament has 73 constituencies and 8 regions. The electorate of a constituency must be as near as possible to the electoral quota as is practicable, having regard to Rule 1. The electoral quota is calculated by taking the total local government electorate as at 1 September 2022, less the electorate of the 3 protected constituencies (Orkney Islands, Shetland Islands and Na h-Eileanan an Iar), divided by 70 (the remaining constituencies). For this review, the electoral quota is 59,902 ($4,250,565 - 57,430 \div 70 = 59,902$).
- 3.3 There are currently two Scottish Parliament constituencies which include the Scottish Borders – the Ettrick, Roxburgh, & Berwickshire County Constituency, comprising Wards 4, 6, 7, 8, 9, 10 and 11 of Scottish Borders Council (total electorate – 56,409); and the Midlothian South, Tweeddale & Lauderdale County Constituency, comprising Wards 1, 2, 3 and 5 of Scottish Borders Council and Wards 1, 4 and part of Ward 6 of Midlothian Council

(total electorate – 65,033). At the time of the first Review in 2010, the electoral quota was 54,728.

4 PROVISIONAL PROPOSALS

- 4.1 Boundaries Scotland's provisional proposals make no changes to the Ettrick, Roxburgh & Berwickshire County Constituency, comprising Wards 4, 6, 7, 8, 9, 10 and 11 of Scottish Borders Council (now with an electorate of 55,131). A map showing this constituency is attached as Appendix 1. There are however, changes proposed to the current Midlothian South, Tweeddale & Lauderdale County Constituency. This would be replaced by the proposed Clyde Valley & Tweeddale County Constituency, comprising Wards 1, 2, 3 and 5 of Scottish Borders Council and Wards 2 and 3 of South Lanarkshire Council (with an electorate of 60,443). A map showing the new constituency is attached as Appendix 2. Comments on the provisional proposals, whether in support or not, need to be sent online to the consultation portal or by post to Boundaries Scotland by 17 June 2023.
- 4.2 If representations objecting to the provisional proposals are received either from a local authority for part of all of the area of the affected constituency, or from a body of 100 or more parliamentary electors for the affected constituency, then Boundaries Scotland is required to hold a local inquiry. This inquiry is conducted by an Assistant Commissioner appointed by Scottish Ministers and the purpose of this inquiry is to hear local opinions; hear criticisms of, or support for, the provisional proposals; receive counter-proposals; and enable everyone who wishes to comment on these or on Boundaries Scotland proposals to do so. The Assistant Commissioner then reports directly to Boundaries Scotland, commenting on the various objections received, and can suggest amendments or alterations to the proposals. In cases where there has been no local inquiry, Boundaries Scotland will take into account any representations received, and make any amendments to their provisional proposals that they judge to be appropriate. In cases where there has been a local inquiry, Boundaries Scotland will consider the Assistant Commissioner's report and the matters discussed at the inquiry, and make any amendments to their provisional proposals they consider necessary. Any revised proposals for constituencies are subject to a further one month public consultation and this is likely to be in late 2023, early 2024.

5 SUGGESTED AMENDMENTS

- 5.1 Officers have been studying the provisional proposals, in terms of electorate size, boundaries and constituency names, to ascertain whether there are alternatives or amendments which could be submitted to the new constituencies. This has included taking account of those constituencies which surround the Scottish Borders.
- 5.2 The main change for the Scottish Borders area in the provisional proposals, is that instead of Wards 1, 2, 3 and 5 of Scottish Borders Council being linked in northwards with Wards in Midlothian, these will instead be linked in westwards with Wards 2 and 3 in South Lanarkshire, taking the constituency from Oxton, Lauder and Earlston in the east, to Leadhills, Abingdon, and Lanark in the west. While this may not be ideal, officers have been unable to work out an alternative with the neighbouring

proposed constituencies. However, Members may wish to consider whether to suggest moving part of Ward 5 from the proposed Clyde Valley & Tweeddale Constituency into the Ettrick, Roxburgh & Berwickshire Constituency. This would mean specifically moving the following polling districts:

No.	Polling District	Electorate
05A	Oxton War Memorial Hall	474
05B	Lauder Public Hall	1,771
05C	Blainslie Village Hall	256
05D	Earlston Parish Church Hall	2,044
	TOTAL	4,545

- 5.3 (a) Historically, Oxton, Lauder and Earlston were in the old Berwickshire County, and this remains their Royal Mail postal county. It is suggested that these historic community ties are sufficient to consider this change as being appropriate. The impact of moving these polling districts would then give the following electorate numbers to each constituency thus -
- Clyde Valley & Tweeddale – 55,898 (previously 60,443)
 - Ettrick, Roxburgh & Berwickshire – 59,676 (previously 55,131)
- (b) Remembering that the electoral quota is 59,902, this change is not out of sync with the electorate in constituencies surrounding the Scottish Borders –
- Dumfriesshire – 61,848
 - Larkhall & Clydesdale – 57,386
 - Midlothian South – 64,424
 - East Lothian – 59,385
- (c) It is also suggested that to better reflect the wider Scottish Borders, the name for the Clyde Valley & Tweeddale Constituency is changed to the Clyde Valley, Tweeddale & Gala Water Constituency.

5.4 As this is a political matter, the above are simply suggested responses, and Members need to decide what, if any response, they wish to make to Boundaries Scotland. As this is a public consultation, members of the public may also submit responses. Copies of the papers associated with the proposals are available for public view at Council Headquarters in Newtown St Boswells and also in Peebles library. The consultation is also being publicised on the Council's website and social media channels.

6 IMPLICATIONS

6.1 Financial

There are no costs attached to any of the recommendations contained in this report.

6.2 Risk and Mitigations

There are no direct risks to the Council in the Second Review of Scottish Parliament constituencies, but there is a reputational risk to the Council if

no response is made to Boundaries Scotland by the Council on behalf of the people of the Borders.

6.3 **Integrated Impact Assessment**

No IIA has been completed as this is a response by Council to a consultation. However, whatever the outcome of the Review, there will be no change to the management of future Scottish Parliament elections in the Scottish Borders, impacting either on polling places or postal voting options, for the people of the Scottish Borders.

6.4 **Sustainable Development Goals**

This consultation has no impact on any of the UN Sustainable Development Goals.

6.5 **Climate Change**

Should the proposals for a Clyde Valley & Tweeddale Constituency go ahead, there will be an increase in distances travelled when running an election, but this increase will be minimised wherever possible.

6.6 **Rural Proofing**

There is no impact on those living in a rural area.

6.7 **Data Protection Impact Statement**

There are no personal data implications arising from the proposals contained in this report.

6.8 **Changes to Scheme of Administration or Scheme of Delegation**

No changes are required to either the Scheme of Administration or the Scheme of Delegation as a result of the proposals in this report.

7 **CONSULTATION**

7.1 The Acting Chief Financial Officer, the Acting Chief Officer Corporate Governance, the Electoral Registration Officer, the Chief Officer Audit and Risk, the Director (People Performance & Change), and Corporate Communications have been consulted and any comments received incorporated into the final report.

Approved by

David Robertson

Chief Executive

Author(s)

Name	Designation and Contact Number
Jenny Wilkinson	Clerk to the Council, Tel: 01835 825004

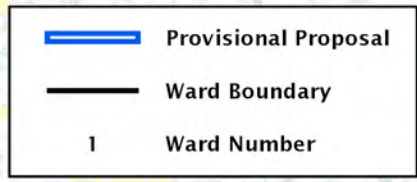
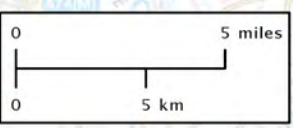
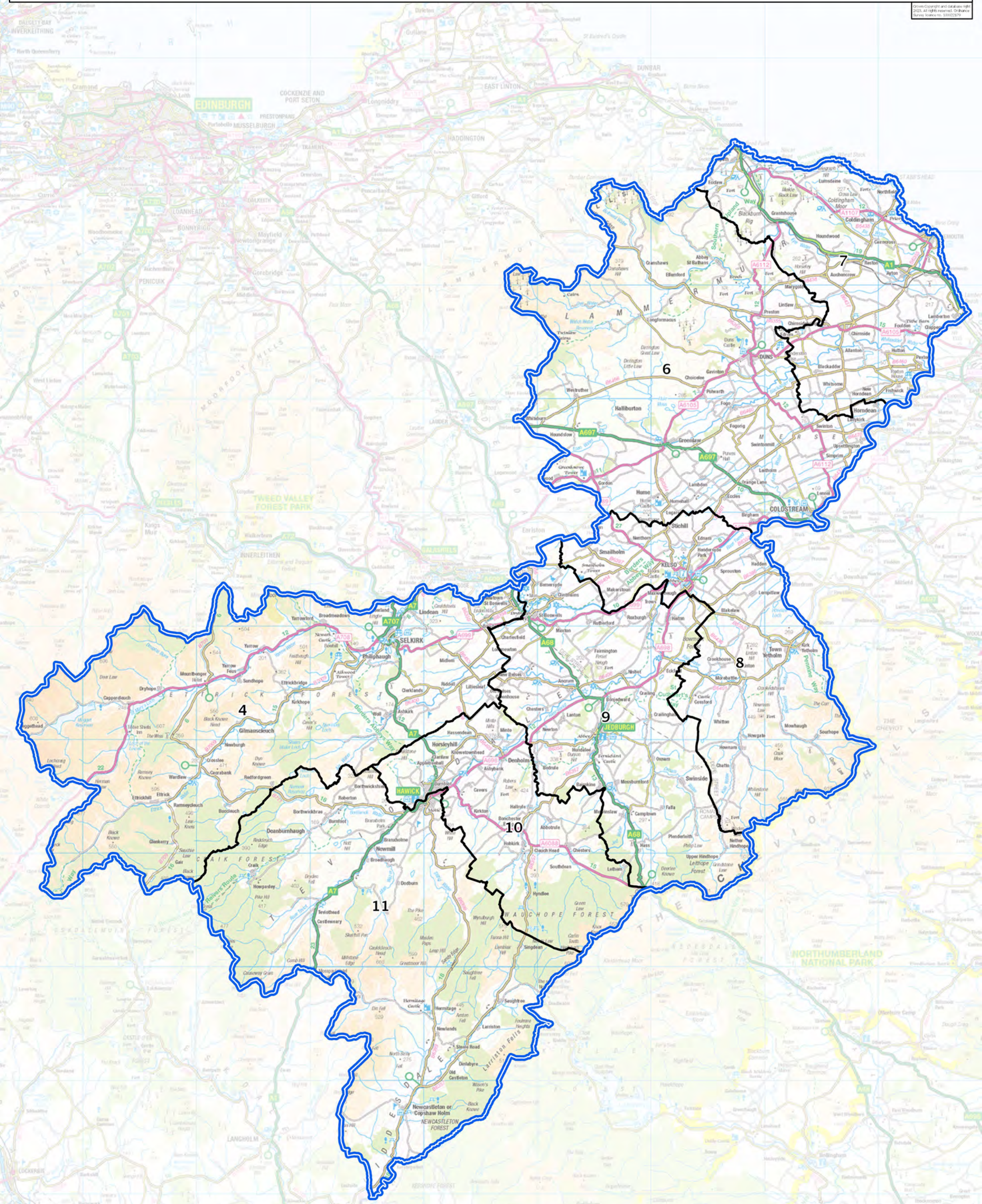
Background Papers: Nil

Previous Minute Reference: N/A

Note – You can get this document on tape, in Braille, large print and various computer formats by contacting the address below. Jenny Wilkinson can also give information on other language translations as well as providing additional copies.

Contact us at Jenny Wilkinson, Democratic Services, Council Headquarters, Newtown St Boswells, Melrose, TD6 0SA. Tel: 01835 825004 Email: jjwilkinson@scotborders.gov.uk

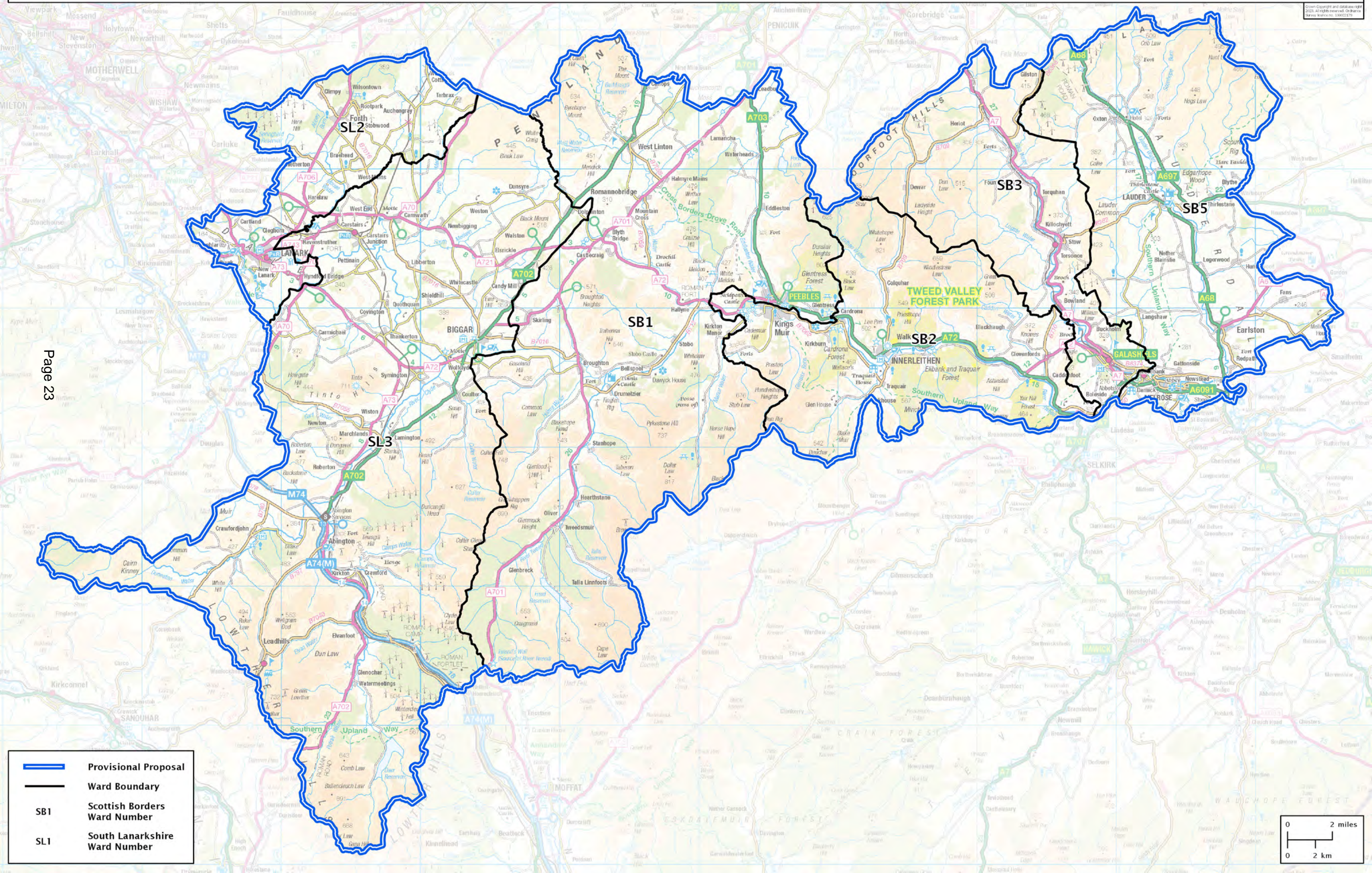
This page is intentionally left blank





This page is intentionally left blank

Second Review of Scottish Parliament Boundaries - Provisional Proposals

Clyde Valley and Tweeddale County Constituency - Electorate 60,443



	Provisional Proposal
	Ward Boundary
SB1	Scottish Borders Ward Number
SL1	South Lanarkshire Ward Number

0	2 miles
0	2 km

This page is intentionally left blank